



Using Concept Plus overlays on-screen

Concept Plus is the software that lets you create and use overlays on a Concept Keyboard. It comes in 2 parts; Concept Plus Driver for using and Concept Plus Editor for creating overlays.

Overlays can also be displayed and used on the computer screen with any Windows application e.g. Writing with Symbols 2000, Word.

This feature is especially useful if you have a whiteboard as the overlays can be resized and moved around the screen easily. You can use on the screen any overlay you have created. You can also create overlay especially for use on the screen.

How to set Concept Plus Driver for on-screen overlays

1. Run Concept Plus Driver
2. If a Concept Plus Driver icon appears at the bottom of the screen you will need to set it for on-screen overlays.



3. Click on the Concept Plus Driver icon at the bottom of the screen.
4. Click the **Keyboard** menu and select **Choose Board**.
5. Click **Screen**.
6. Click **OK**.

7. Now you can use your overlay, drag and resize it to suit your students' needs.
8. Run the program you want to use the overlay with, e.g. WWS2000.
9. Click on a word in the grid to write.
10. When you have finished use the Concept Plus Driver **menu** to **exit**.

Note: If you set Concept Plus Driver to display overlays on-screen it will remember this setting the next time you use it. To change back to using overlays on a Concept Keyboard follow the instructions above but choose **Concept Keyboard [256 keys]** instead of **Screen**.



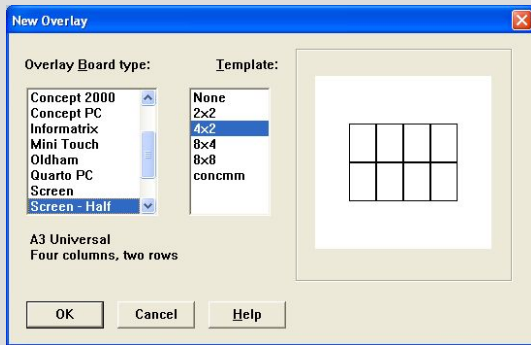
Using Concept Plus overlays on-screen

How to create an on-screen overlay



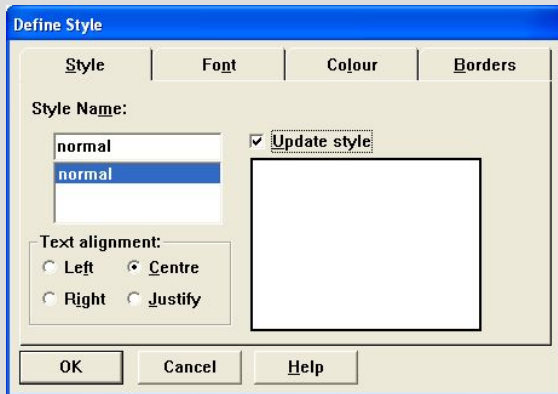
1. Double click on the **Concept Plus Editor** icon or choose it from the **Programs** list. A Concept Keyboard will be displayed on screen.

2. Click the **File** menu and choose **New**.



3. Scroll down the **Overlay Board Type** list and choose **Screen - Half**
4. Choose **4x2** from the **Template** list
5. Click **OK**

6. Now you need to set the font to a suitable size.



7. Click in a cell on the grid
8. Click the **Format** menu and choose **Style**
9. Click the **Update style** box
10. Use the **Font** tab to change the font size to **28**
11. Click **OK**

12. Now use the mouse to double click in a cell. The **Block Contents** dialog box will open.

13. Type your text into the text box then click **OK**.

14. Click the **Graphics** button then browse to add a graphic (.bmp, .wmf or .emf)

15. Repeat for subsequent cells.

16. When you have finished choose **Save As...** from the **File** menu to save your overlay.

17. Your on-screen overlay is now ready to use.